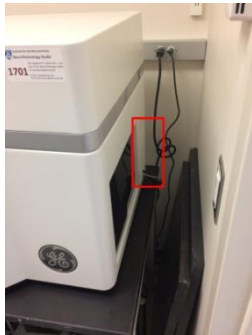


GE InCell 2200 Analyzer On-Off Manual

Turn-On the system

Log into your account.

Cold-Start: if the no indicator light is on, locate the system “On” button at the right side of the system, press the button (red box) for one second. Wait until only “Green” indicator light is on, proceed as “Warm-Start”



Warm-Start: run GE InCell Analyzer as “Administrator”

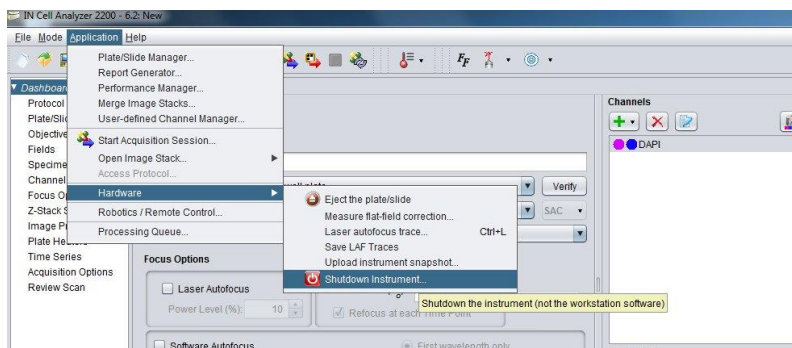
Check your plate bottom, it needs to be CLEAN!

Turn-Off the system

- Save all your data and take out your plate.
- Check the online calendar to see if you are the last user of the day.

If you are not the last user. Close Analyzer.

If you are the last user. Switch off the system “Application” -> “Hardware” --> “Shutdown Instrument...”



- Log off your account.